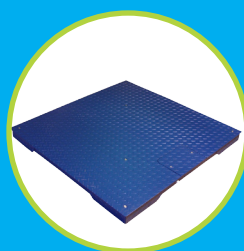


AADAM[®]
THE RIGHT BALANCE
Speed, Performance, Value



SE ASIA 2010

BALANCES AND SCALES



About Adam

Adam Equipment is a manufacturer of balances and scales serving laboratory, industrial, medical, retail, and education customers worldwide. Since the company was founded in the United Kingdom more than three decades ago, Adam has strategically established a carefully designed network of offices throughout the world to ensure that a high level of service is provided to its customers, wherever they are. With facilities in the United Kingdom, United States, South Africa, Australia and China, Adam maintains a strong global presence.



Adam is committed to manufacturing reliable products with proven technology and user-friendly features. Customer requirements are the ultimate driving force behind each new product development. In addition, every Adam facility provides a full range of services, offering Adam's worldwide customer base responsive support and assistance.

...serving the laboratory, education, industrial, retail and medical markets around the world...

Adam began with a pledge to always deliver products with the right balance of speed, performance and value to its customers. The company takes great pride in meeting this goal each day, with every customer. Adam's commitment to ongoing, customer-driven product development ensures that the company will continue to move forward, providing customers with the weighing solutions they need now and in the future.

Contents

About Adam	2	BFW Floor Weighing Scales	22
Contents	3	LBC Weighing Scales	23
Features Key	3	CBC Counting Scales	24
Selection Guide	4	CBD Dual Counting Scales	25
PW Analytical Balances	5	GFC Floor Counting Scales	26
PGW Precision Balances	6-7	AE 301 Indicator	27
PGL Precision Balances	8	GK and GK-M Indicators	28
PMB Moisture Balances	9	GC Counting Indicator	29
Highland™ Portable Precision Balances	10	PB Platform Bases	30
Core™ Compact Balances	11	PT Platform Bases	31
Core™ Grain Scale	12	AELP Pallet Beams	32
Dune™ Compact Balances	13	IHS Crane Scales	33
TBB Mechanical Balances	14	AZextra Retail Scales - Price computing	34
LBK Bench Scales	15	WBZ Retail Wash Down Scales	35
CPWplus Weighing Scales	16-17	MXB Baby Scale	36
WBW Wash Down Scales	18	MDW 160M Medical Scale	37
LBH Weighing Scales	19	Anti-Vibration Table	38
CBK Bench Scales	20	AdamDu- Data Collection Software	38
GFK, GFK-H and GFK-M Floor Scales	21		

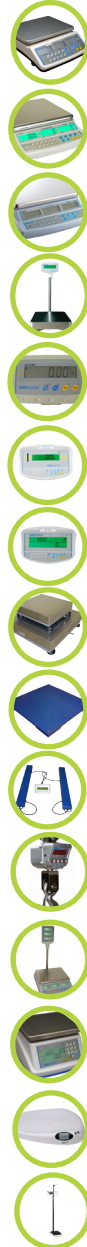
Features Key

 Multiple Weighing Units	 External Calibration	 Totalisation
 Parts Counting	 Internal Calibration	 External Battery
 Check Weighing	 Weigh Below Balance Hook	 Internal Rechargeable Battery
 Dynamic Weighing	 Security Lock Down	 Time
 Specific Gravity/Density	 GLP/ISO Reports (Printouts)	 Date
 Percentage Weighing	 RS-232 Interface	 USB interface
 Australian OIML and EC Approved	 Full Range Tare	 Backlit Display
 IP65 Washdown		

Selection Guide

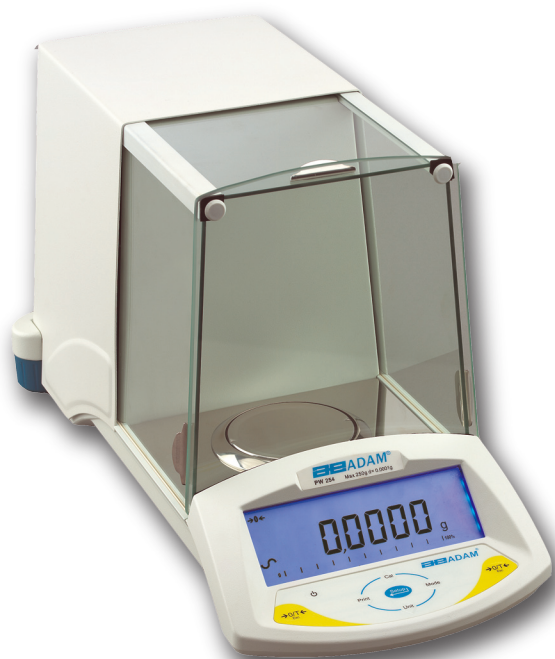


Model	Capacity	Readability	Page Number
PW	120g - 250g	0.0001g	5
PGW	150g - 4500g	0.001g - 0.01g	6 - 7
PGL	200g - 20000g	0.001g - 0.1g	8
PMB	50g - 200g	0.001g - 0.01g	9
Highland™	120g - 3000g	0.005g - 0.1g	10
Core™	200g - 5000g	0.01g - 1g	11
CQT™ Grain Scale	1750g	0.1g	12
Dune™	200g - 5000g	0.1g - 2g	13
TBB	2610g	0.1g	14
LBK	3kg - 30kg	0.5g - 5g	15
CPW <i>plus</i>	35kg - 300kg	10g - 100g	16-17
WBW WBW-M	2000g - 16kg 3000g - 15kg	0.2g - 2g 1g - 5g	18
LBH	3kg - 30kg	0.1g - 1g	19
CBK CBK-M	4000g - 48kg 3000g - 30kg	0.1g - 2g 1g - 10g	20
GFK GFK-H GFK-M	75kg - 600kg 75kg - 150kg 60kg - 300kg	5g - 50g 1g - 2g 20g - 100g	21
BFW	75kg - 300kg	5g - 20g	22



Model	Capacity	Readability	Page Number
LBC	3kg - 30kg	0.1g - 1g	23
CBC CBC-M	4000g - 48kg 3000g - 30kg	0.1g - 2g 1g - 10g	24
CBD	3000g - 30kg	0.1g - 1g	25
GFC	75kg - 300kg	5g - 20g	26
AE 301	Selectable	Selectable	27
GK GF-M	Selectable	Selectable	28
GC	Selectable	Selectable	29
PB	60kg - 300kg	Selectable	30
PT	1000kg - 3000kg	Selectable	31
AELP	1000kg - 2000kg	Selectable	32
IHS	1000kg - 10000kg	Selectable	33
AZ <i>extra</i>	3000g - 30kg	1g - 10g	34
WBZ	3kg - 15kg	1g - 5g	35
MXB	20kg	10g	36
MDW 160M	160kg	100g	37

PW Analytical Balances



Features

- Bi-directional RS-232 interface to communicate to printers or computers
- GLP compliant print outs for better record keeping
- Date and time function
- Security slot for Kensington™ type lock
- Internal calibration with auto calibration for temperature changes or set time
- Colour coded keys to distinguish frequently used keys
- Large backlit LCD with dual text display and multi-language settings
- Capacity tracker to show how much weighing capacity has been used
- 16 weighing units (including one custom unit)

Applications

- Weighing
- Net / Total
- Check weighing
- Percentage weighing
- Weight accumulation
- Averaging
- Parts counting
- Animal / dynamic weighing
- Density determination
- Below balance weighing

Technical Specifications

Model	PW 124	PW 184	PW 214	PW 254
Maximum capacity	120g	180g	210g	250g
Readability	0.0001g			
Repeatability (S.D.)	0.00015g	0.0002g		
Linearity (±)	0.0002g		0.0003g	
Pan size	90mm Ø			



General Specifications

Units of measurement	Gram (g), Milligram (mg), Carat (ct), Ounce (Oz), Dram (d), Grain (GN), Troy Ounce (Ozt), Pennyweight (dWt), Momme (MM), Taels Hk. (TL.H), Taels S. (TL.S), Taels T. (TL.T), Tical (ti), Newton (N), Tola (T), Custom unit
Interface	Bi-directional RS-232
Calibration	Calibration with internal mass. Alternatively the user can calibrate using an external mass
Display	Backlit LCD with dual digits (24 mm high) and capacity tracker
Power supply	15VDC, 50/60 Hz, 800 mA (Input Voltage 100-240 V, 50/60 Hz) adapter
Operating temperature	10°C to 40°C
Housing	Die cast aluminium housing with glass weighing chamber
Draught shield dimensions	202 x 158 x 215mm
Overall dimensions (wxdxh)	256 x 524 x 275mm
Net weight	12kg

Accessories

- No. 8023 - Adam printer
- No. 5001 - Adam statistics printer
- No. 3584 - Thermal paper roll for Adam printers
- No. 8036 - Anti-vibration table
- No. 7452 - Density determination kit
- No. 3620 - Below balance hanger

- No. 8030 - Security lock and cable
- No. 8003 - Dust cover
- No. 8188 - In use cover
- No. 9028 - RS-232 cable
- No. 9066 - RS-232 to USB interface cable
- No. 9061 - AdamDU - data collection software

PGW Precision Balances



Features

- Bi-directional RS-232 interface to communicate to printers or computers
- GLP compliant print outs for better record keeping
- Date and time function
- Security slot for Kensington™ type lock
- Internal calibration with auto calibration for temperature changes or set time
- Colour coded keys to distinguish frequently used keys
- Large backlit LCD with dual text display and multi-language settings
- Capacity tracker to show how much weighing capacity has been used
- 17 weighing units (including one custom unit)
- Glass draft shield supplied as standard

Applications

- Weighing
- Net / total
- Check weighing
- Percentage weighing
- Weight accumulation
- Averaging
- Parts counting
- Animal / dynamic weighing
- Density determination
- Below balance weighing

Technical Specifications

Model Ext. Cal	PGW 153e	PGW 253e	PGW 453e	PGW 753e
Model Int. Cal	PGW 153i	PGW 253i	PGW 453i	PGW 753i
Maximum capacity	150g	250g	450g	750g
Readability	0.001g			
Repeatability (S.D.)	0.001g			0.002g
Linearity (±)	0.002g		0.003g	
Pan size	140 x 140mm			

General Specifications

Units of measurement	Gram (g), Kilogram (kg), Milligram (mg), Carat (ct), Pound (lb), Ounce (Oz), Dram (d), Grain (GN), Troy Ounce (Ozt), Pennyweight (dWt), Momme (MM), Taels Hk. (TL.H), Taels S. (TL.S), Taels T. (TL.T), Tical (ti), Newton (N), Custom unit
Interface	Bi-directional RS-232
Calibration	Internal or external, selectable automatic calibration due to change in time or temperature Models with an "i" have internal calibration, models with and "e" are external calibration
Display	Backlit LCD with dual digits (24 mm high) and capacity tracker
Power supply	15VDC, 50/60 Hz, 800 mA (Input Voltage 100-240 V, 50/60 Hz) adapter
Operating temperature	10°C to 40°C
Housing	Die cast aluminium housing
Draught shield	Square glass draught shield
Draught shield dimensions	158 x 158 x 80mm
Overall dimensions (wxdxh)	251 x 358 x 104mm
Net weight	5.5kg



Accessories

- | | |
|---|--|
| No. 8023 - Adam printer | No. 8030 - Security lock and cable |
| No. 5001 - Adam statistics printer | No. 8002 - Dust cover |
| No. 3584 - Thermal paper roll for Adam printers | No. 8031 - In use cover |
| No. 8036 - Anti-vibration table | No. 9028 - RS-232 cable |
| No. 7453 - Density determination kit | No. 9066 - RS-232 to USB interface cable |
| No. 3620 - Below balance hanger | No. 9061 - AdamDU - data collection software |

PGW Precision Balances



Features

- Bi-directional RS-232 interface to communicate to printers of computers
- GLP compliant print outs for better record keeping
- Date and time function
- Security slot for Kensington™ type lock
- Internal calibration with auto calibration for temperature changes or set time
- Colour coded keys to distinguish frequently used keys
- Large backlit LCD with dual text display and multi-language settings
- Capacity tracker to show how much weighing capacity has been used
- 17 weighing units (including one custom unit)

Applications

- Weighing
- Net / total
- Check weighing
- Percentage weighing
- Weight accumulation
- Averaging
- Parts counting
- Animal / dynamic weighing
- Density determination
- Below balance weighing



Technical Specifications

Model Ext. Cal	PGW 1502e	PGW 2502e	PGW 3502e	PGW 4502e
Model Int. Cal	PGW 1502i	PGW 2502i	PGW 3502i	PGW 4502i
Maximum capacity	1500g	2500g	3500g	4500g
Readability	0.01g			
Repeatability (S.D.)	0.01g		0.02g	
Linearity (±)	0.02g		0.03g	
Pan size	192 x 192mm			

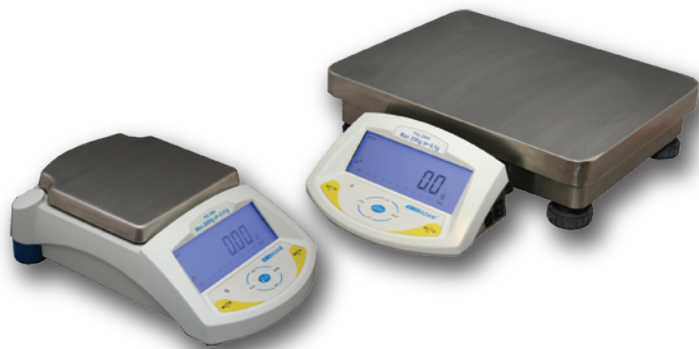
General Specifications

Units of measurement	Gram (g), Kilogram (kg), Milligram (mg), Carat (ct), Pound (lb), Ounce (Oz), Dram (d), Grain (GN), Troy Ounce (Ozt), Pennyweight (dWt), Momme (MM), Taels Hk. (TL.H), Taels S. (TL.S), Taels T. (TL.T), Tical (ti), Newton (N), Custom unit
Interface	Bi-directional RS-232
Calibration	Internal or external, selectable automatic calibration due to change in time or temperature Models with an "i" have internal calibration, models with and "e" are external calibration
Display	Backlit LCD with dual digits (24 mm high) and capacity tracker
Power supply	15VDC, 50/60 Hz, 800 mA (Input Voltage 100-240 V, 50/60 Hz) adapter
Operating temperature	10°C to 40°C
Housing	Die cast aluminium housing
Overall dimensions (wxdxh)	251 x 358 x 104mm
Net weight	5.5kg

Accessories

- | | |
|---|--|
| No. 8023 - Adam printer | No. 8002 - Dust cover |
| No. 5001 - Adam statistics printer | No. 8031 - In use cover |
| No. 3584 - Thermal paper roll for Adam printers | No. 9028 - RS-232 cable |
| No. 8036 - Anti-vibration table | No. 9066 - RS-232 to USB interface cable |
| No. 3620 - Below balance hanger | No. 9061 - AdamDU - data collection software |
| No. 8030 - Security lock and cable | |

PGL Precision Balances



Features

- Metal casing
- Bi-directional RS-232 interface
- Security slot for Kensington™ type lock
- External calibration
- GLP print outs
- Colour coded keys
- Backlit LCD with dual display
- 9 weighing units
- Draft shield models with 0.001g readability
- Capacity tracker

Applications

- Weighing
- Net / total
- Check weighing
- Percentage weighing
- Parts counting
- Density determination
- Below balance weighing

Technical Specifications

Model	PGL 203	PGL 303	PGL 2002	PGL 3002	PGL 4001	PGL 6001	PGL 8001	PGL 10001	PGL 20001
Maximum capacity	200g	300g	2000g	3000g	4000g	6000g	8000g	10000g	20000g
Readability	0.001g	0.001g	0.01g	0.01g	0.1g				
Repeatability (S.D.)	0.002g	0.003g	0.02g	0.03g	0.2g				
Linearity (±)	0.004g	0.005g	0.04g	0.05g	0.2g			0.4g	
Pan size	145 x 125mm			192 x 192mm				400 x 300mm	
Units of Measurements	g,mg,ct,GN,N,ozt,dwt,oz, custom		g,kg,ct,GN,N,ozt,dwt,oz, custom		Grams (g), Kilogram (kg), Carat (ct), Grain (GN), Newtons (N), Pound (lb), Ounce (oz), Pound-Ounce (lb:oz), custom				

General Specifications

Typical stabilisation time	2-3 Sec
Interface	Bi-directional RS-232 (Standard)
Calibration	Automatic external
Display	Backlit LCD with dual digits (24 mm high) and capacity tracker
Power supply	12 VDC, 50/60 Hz, 800 mA (Input Voltage 100-240 V, 50/60 Hz)
Operating temperature	10°C to 40°C
Housing	Die cast aluminium housing (glass weighing chamber for models with 1mg readability)
Draught shield	Supplied as standard on models with 1mg readability
Draught shield dimensions	162 x 162 x 52mm
Overall dimensions (wxdxh)	251 x 358 x 104mm-PGL 203-8001 / 300 x 450 x 104mm-PGL 10K1 & 20K1
Net weight	4kg



Accessories

No. 8023 - Adam printer
 No. 5001 - Adam statistics printer
 No. 9192 - Thermal paper for Adam Printers (5 pack)
 No. 8036 - Anti-vibration table
 No. 7543 - Density determination kit
 No. 3620 - Below balance hanger

No. 8030 - Security lock and cable
 No. 8003 - Dust cover
 No. 9028 - RS-232 cable
 No. 9066 - RS-232 to USB interface cable
 No. 9061 - AdamDU - data collection software

PMB Moisture Balance



Features

- USB host for memory stick download USB I/O interface
- RS-232 interface
- Built-in memories for storing products and settings
- 3 settings for heating sample, ramp up, step and standard
- Automatic test start setting for when the lid is closed
- Pan lifter to easily remove samples
- Large backlit display with dual text prompts
- Security locking slot for Kensington™ type lock and cable
- Operation in English, French, Spanish and German and prints results in selected language

Applications

- Weighing
- Moisture Determination
- ATRO Moisture

Technical Specifications

Model	PMB 53	PMB 202
Maximum capacity	50g	200g
Readability	0.001g / 0.01%	0.01g / 0.05%
Repeatability (S.D.)	0.002g / 0.05% (10g sample)	0.02g / 0.2% (10g sample)
Pan size	90mm ø	

General Specifications

Weighing Units	Gram (g), Percent Moisture (% M), Percent Solids (% S), Percent Moisture / dry bases (ATRO % M), Percent Solids / dry bases (ATRO % S)
Typical stabilisation time	4 secs
Interface	USB Host, USB I/O, bi-directional RS-232
Internal Memory	Up to 99 test results 49 programmable user settings for configuration
External Memory	External memory available with USB drive for additional configurations and store test results
Calibration	Automatic External
Heating Element	Single 400W halogen heater 50° to 160°C selectable in 1°C steps
Heating Options	Standard (one step) Step - up to 3 temp settings ramp
Display	Backlit LCD display with dual digits and capacity tracker, 24mm high digits
Power supply	Power cord, factory set for 115VAC or 230VAC 50/60hz
Operating temperature	0°C - 40°C
Overall dimensions (LxWxH)	250mm x 360mm x 185mm
Net weight	6kg



Accessories

- No. 8030 - Kensington™ type lock and cable
- No. 9028 - RS-232 cable
- No. 9304 - USB cable
- No. 9061 - AdamDU Data Collection Software

- No. 9066 - RS-232 to USB Interface Cable
- No. 8023 - Adam printer
- No. 3584 - Thermal paper roll for Adam printers

Highland Portable Precision Balances



Features

- RS-232 and USB interfaces
- Can be stacked for storage
- ShockProtect™ overload protection
- Audible overload indicator
- Internal calibration with HandiCal™ for fast and accurate readings
- Lock down mounting slot of Kensington™ type lock and cable
- Dual tare keys, color coded for easy recognition
- Internal rechargeable battery with auto power off and low battery indicator
- Capacity tracker
- Removable draft shield

Applications

- Weighing
- Percentage weighing
- Parts counting
- Totalization / Accumulation

Technical Specifications

Model	HCB 123	HCB 153	HCB 302	HCB 602H	HCB 602	HCB 1002	HCB 1502	HCB 3001
Maximum capacity	120g	150g	300g	600g	600g	1000g	1500g	3000g
Readability	0.001g	0.005g	0.01g	0.01g	0.02g	0.01g	0.05g	0.1g
Repeatability (S.D.)	0.003g	0.005g	0.01g	0.01g	0.02g	0.02g	0.05g	0.1g
Linearity (±)	0.003g	0.01g	0.02g	0.02g	0.04g	0.02g	0.1g	0.2g
Pan size	120mm ø							

General Specifications

Units of measurement	Grams (g), Carat (ct), Pound (lb), Ounce (oz), Dram (d), Grain (GN), Troy Ounce (ozt), Pennyweight (dwt), Momme (MM), Tels T.(TL.T), Singapore Tels (TL.C), Taiwan Tels (TL.t), Teals (t), Newtons (N) Grams (g2)
Typical stabilisation time	2 Sec
Interface	RS-232 and USB (Both included standard)
Calibration	Manual internal calibration
Display	0.6" high 6 digits LCD with backlight
Power supply	12VDC 800mA adapter
Operating temperature	0°C to 40°C / 32°F to 104°F
Housing	ABS plastic, stainless steel platform
Draught shield dimensions	130mm ø x 90mm high
Overall dimensions (wxdxh)	172 x 75 x 251mm
Net weight	1.6kg

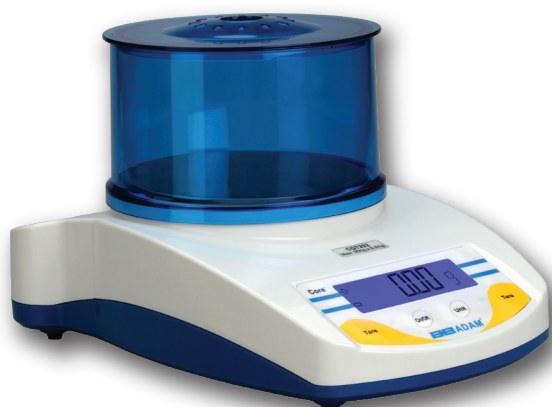
Accessories

No. 8023 - Adam printer
 No. 3584 - Thermal paper roll for Adam printers
 No. 5111 - In use cover
 No. 7958 - Hard carry case with lock

No. 9028 - RS-232 cable
 No. 9066 - RS-232 to USB interface cable
 No. 9061 - AdamDU - data collection software



Core Compact Portable Balances



Features

- Stainless steel pan
- Three-point ShockProtect™ overload protection
- Lock down mounting slot of Kensington™ type lock
- Dual tare keys, color-coded for easy recognition
- Auto power off to save battery life
- Low-battery indicator
- Large backlit display is clear and quick to read
- In-transit protection
- Removable draft shield (standard on 120mm ø pans)
- Stacking storage (CQT202, 251, 601, and 1501 models)

Applications

- Weighing



Technical Specifications

Model	CQT 202	CQT 251	CQT 601	CQT 1501	CQT 2601	CQT 2000	CQT 5000
Maximum capacity	200g	250g	600g	1500g	2600g	2000g	5000g
Readability	0.01g	0.1g				1g	
Repeatability (S.D.)	0.01g	0.1g				1g	
Linearity (±)	0.02g	0.2g				2g	
Pan size	120mm ø				145mm ø		

General Specifications

Units of measurement	Grams (g), Carat (ct), Ounce (oz), Pennyweight (dwt), Tels T. (TL.T), Tels S (TL.S), Tels Hk. (TL.H), Newtons (N), Kilogram (kg), Pound (lb)
Typical stabilisation time	2-3 Sec
Calibration	External Calibration
Display	6 digit LCD, 15mm digits with backlight
Power supply	12VAC @ 150mA adapter or 6 x AA batteries
Operating temperature	0°C to 40°C
Housing	ABS plastic
Draught shield dimensions	130mm ø x 90mm high (standard on 120mm ø pans)
Overall dimensions (wxdxh)	170 x 245 x 80mm
Net weight	0.9kg

Accessories

No. 5111 - In-use cover

No. 7958 - Hard carry case with lock

Core™ Grain Scale



Features

- Stainless steel pan
- Three-point ShockProtect™ overload protection
- Auto power off to save battery life
- Low-battery indicator
- Large backlit display is clear and quick to read
- Calculates kilograms per hectolitre
- Removable draft shield supplied as standard
- Analyzes quality of grain yield from original sample to final graded sample

Applications

- Weighing
- Percentage Weighing



Technical Specifications

Model	CQT 1751GR
Maximum capacity	1750g
Readability	0.1g
Repeatability (S.D.)	0.1g
Linearity (±)	0.2g
Pan size	120mm ø

General Specifications

Units of measurement	Grams (g), Kilogram per hectolitre
Typical stabilization time	2-3 Sec
Calibration	Automatic External
Display	Backlit LCD with 6 - 18mm high digits
Power supply	12VAC @ 150mA AC adapter (included) or 6 x AA batteries
Operating temperature	0°C to 40°C
Housing	ABS plastic
Draft shield dimensions	130mm ø x 90mm high
Overall dimensions (wxdxh)	170 x 245 x 80mm
Net weight	0.82kg

Accessories

No. 9306 - In-use cover

No. 9307 - Hard carry case with lock

No. 8030 - Kensington™ type lock & cable

Dune Compact Balances



Features

- AC adapter included
- Auto power off
- Overload indicator
- Durable construction
- Overload protection
- Removable top pan



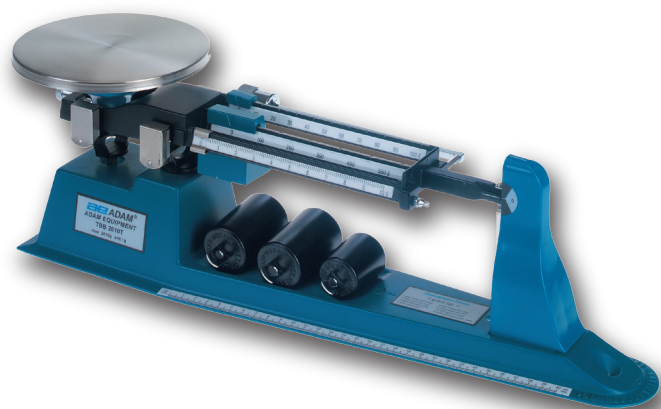
Technical Specifications

Model	DCT 201	DCT 2000	DCT 5000
Maximum capacity	200g	2000g	5000g
Readability	0.1g	1g	2g
Repeatability (S.D.)	0.1g	1g	2g
Linearity (\pm)	0.2g	2g	4g
Pan size	145mm x 145mm		

General Specifications

Units of measurement	Grams (g), Ounce (oz), Pound (lb)
Typical stabilization time	2 Sec
Calibration	External, digital from keypad
Display	LCD with 6mm high digits
Power supply	12VAC 150mA adapter or 6 x AA batteries
Operating temperature	0°C to 40°C
Housing	ABS plastic
Overall dimensions (wxdxh)	145 x 210 x 40mm
Net weight	0.48kg

TBB Mechanical Balances



Features

- Magnetic damping for faster stability
- Rigid metal construction for durability
- Zero adjust facility to enable zero reading
- Easy to read notched and tiered graduated beams
- Stainless steel weighing pan
- Ruler for measuring cm and inches
- Weight holders for storing additional weights
- Security slot for Kensington™ lock
- Tripod legs and weigh below hook included for density determination measurements
- Tare function capable with TBB 2610T

Applications

- Weighing
- Below balance weighing

Technical Specifications

Model	TBB 2610T	TBB 2610S
Maximum capacity	2610g	
Readability	0.1g	
Tare range	225g	N/A
Pan size	150mm Ø	



General Specifications

Units of measurement	Gram (g)
Display	Graduated beam
Housing	Aluminium
Overall dimensions (wxdxh)	TBB: 505 x 110 x 60mm
Net weight	TBB: 2.7kg

Accessories

No. 8030 - Security lock and cable

No. 9024 - Hard carry case with lock

LBK Bench Scales



Features

- Rechargeable battery
- Stainless steel pan
- 5 weighing units
- Pre-set tare
- Auto power off
- Overload alarm
- Adjustable level feet
- Customise, selectable weighing units and applications

Applications

- Weighing
- Parts counting
- Percentage weighing

Technical Specifications

Model	LBK 3	LBK 6	LBK 12	LBK 30
Maximum capacity	3kg	6kg	12kg	30kg
Readability	0.5g	1g	2g	5g
Repeatability (S.D.)	0.5g	1g	2g	5g
Linearity (±)	1g	2g	4g	10g
Pan size	250mm x 180mm			



General Specifications

Units of measurement	Gram (g), Kilogram (kg), Pound (lb), Ounce (Oz), Pound-Ounce (lb-oz)
Typical stabilisation time	2 Secs
Calibration	Automatic external
Display	Green backlit LCD display with 6 digits
Power supply	Rechargeable 6v 4Ah battery and mains power cord
Operating temperature	0°C to 40°C
Housing	ABS plastic, stainless steel platform
Overall dimensions (wxdxh)	250mm x 307mm x 110mm
Net weight	1.8kg

Accessories

No. 9664 - In-use cover

CPWplus Weighing Scales

Features

- Stainless steel weighing pan with remote indicator
- Wall mounting kit included
- Large backlit LCD display
- Simple 4 button operation
- AC adapter and battery power
- Easy maneuverability with wheels on CPWplus L and W
- 4 Weighing units (Kg, lb, oz, lb:oz)
- Hold function
- Bi-directional RS-232 interface

Applications

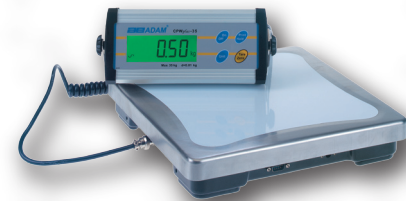
- Weighing
- Animal / dynamic weighing



Technical Specifications

Model	CPWplus 35	CPWplus 75	CPWplus 150	CPWplus 200
Maximum capacity	35kg	75kg	150kg	200kg
Readability	10g	20g	50g	50g
Repeatability (S.D.)	10g	20g	50g	50g
Linearity (±)	20g	40g	100g	100g
Platform size	300 x 300mm			

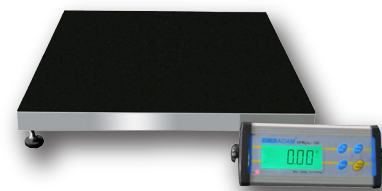
Battery operated (6 x AA batteries)



Technical Specifications - M series

Model	CPWplus 35M	CPWplus 75M	CPWplus 150M	CPWplus 200M
Maximum capacity	35kg	75kg	150kg	200kg
Readability	10g	20g	50g	50g
Repeatability (S.D.)	10g	20g	50g	50g
Linearity (±)	20g	40g	100g	100g
Platform size	500 x 500mm			

Rechargeable battery operated (internal)

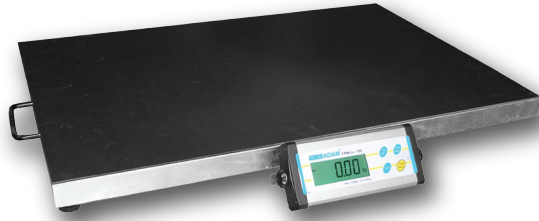


Technical Specifications - W series

Model	CPWplus 35W	CPWplus 75W	CPWplus 150W	CPWplus 200W
Maximum capacity	35kg	75kg	150kg	200kg
Readability	10g	20g	50g	50g
Repeatability (S.D.)	10g	20g	50g	50g
Linearity (±)	20g	40g	100g	100g
Platform size	500 x 500mm			

Rechargeable battery operated (internal)





Technical Specifications - L series

Model	CPWplus 35L	CPWplus 75L	CPWplus 150L	CPWplus 200L	CPWplus 300L
Maximum capacity	35kg	75kg	150kg	200kg	300kg
Readability	10g	20g	50g	50g	100g
Repeatability (S.D.)	10g	20g	50g	50g	100g
Linearity (±)	20g	40g	100g	100g	200g
Platform size	900 x 600mm				

Rechargeable battery operated (internal)

General Specifications

Units of measurement	Kilogram (kg), Pound (lb), Ounce (oz), Pound-Ounce (lb-oz)
Typical stabilisation time	2 Sec
Interface	Bi-directional RS-232 interface
Calibration	Automatic external with user selectable calibration mass
Display	Backlit LCD with 25mm high digits
Power supply	12 VAC 150mA Adapter for CPWplus - 6 x AA size batteries in the base 12VDC 500-800mA Adapter for CPWplus M,L and W - internal rechargeable battery (included)
Operating temperature	0° to 40°C
Housing	Indicator: aluminium - Platform: mild Steel base and stainless steel platform
Overall dimensions (wx dxh)	Indicator: 220 x 95 x 43mm - CPWplus: 300 x 300 x 50mm CPWplus-M: 500 x 500 x 40mm - CPWplus-L: 900 x 600 x 80mm
Net weight	CPWplus: 4kg - CPWplus-M: 8.5kg - CPWplus-L: 17kg

Accessories

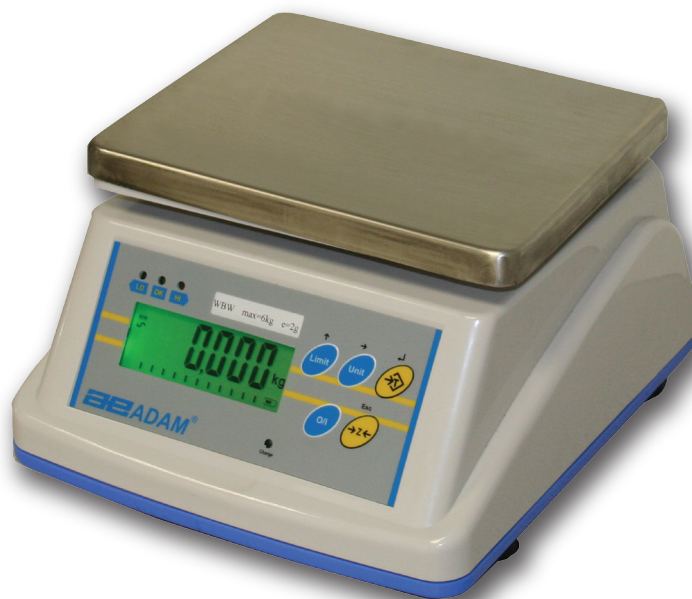
- No. 8023 - Adam printer
- No. 3584 - Thermal paper roll for Adam printers
- No. 7954 - Hard carry case with lock (not available with CPWplus L and M)
- No. 9028 - RS-232 cable
- No. 9066 - RS-232 to USB interface cable
- No. 9061 - Adam DU - data collection software
- No. 9013 - Rubber matt for CPWplus L



WBW Wash Down Scales

Features

- Sealed wash down rated to IP65 for wet environments
- Large backlit LCD display with capacity tracker to clearly see how much weighing capacity is remaining
- Coloured LED check limit indicators for visual check weighing - red, green and orange
- Rechargeable battery with up to 90 hours operation before needing to be recharged. AC adapter included
- Selectable auto power off to save battery life
- Stainless steel pan
- 5 weighing units
- OIML type approval (WBW-M only)
- Adjustable level feet
- Full range tare



Applications

- Weighing
- Check weighing

Technical Specifications

Model	WBW 2	WBW 4	WBW 8	WBW 16
Maximum capacity	2000g	4000g	8000g	16kg
Readability	0.2g	0.5g	1g	2g
Repeatability (S.D.)	0.2g	0.5g	1g	2g
Linearity (±)	0.4g	1g	2g	4g
Platform	210 x 173mm			

EC OIML Type Approved Models: 

Model	WBW 3M	WBW 6M	WBW 15M
Maximum capacity	3000g	6000g	15kg
Readability	1g	2g	5g
Repeatability (S.D.)	1g	2g	5g
Linearity (±)	2g	4g	10g
Platform	210 x 173mm		



General Specifications

Model	WBW	WBW M
Weighing Units	Gram (g), Kilogram (kg), Pound (lb), Ounce (oz), Pound-Ounce (lb-oz)	Gram (g), Kilogram (kg)
Approvals	Non approved	EC type OIML approved Class III
Stabilisation Time	2 Sec	
Calibration	Automatic External	Not permitted
Display	6 digit backlit LCD (optional rear display available)	
Power Supply	12VAC 800mA AC adapter, internal rechargeable battery (both included)	
Operating Temperature	-10° to 40°C	
Housing	IP65 sealed ABS plastic housing with stainless steel pan	
Overall Dimensions (wxhxd)	231 x 265 x 153mm	
Net Weight	3.3kg	

LBH Weighing Scales



Features

- Hold function
- Capacity tracker
- Tare function
- Large backlit display
- Adjustable feet
- Stainless steel top pan (Grade 304)

Applications

- Weighing
- Parts counting
- Percentage weighing
- Check weighing

Technical Specifications

Model	LBH 3	LBH 6	LBH 15	LBH 30
Maximum capacity	3kg	6kg	15kg	30kg
Readability	0.1g	0.2g	0.5g	1g
Repeatability (S.D.)	0.2g	0.4g	1g	2g
Linearity (\pm)	0.2g	0.4g	1g	2g
Pan Size	250mm x 180mm			



General Specifications

Weighing Units	kg, g, lb, oz, custom unit
Stabilization Time	2 secs
Calibration	Automatic External
Display	6 digit LCD display backlit clear light
Power Supply	12vDC 800mA adapter / Rechargeable 6v 4Ah battery
Operating Temperature	0°C - 40°C
Housing	ABS Plastic, Stainless steel top pan
Overall Dimensions	250 x 307 x 110mm
Net Weight	1.8kg

Accessories

No. 9664 - In-use cover

CBK Bench Scales



Features

- Check weighing LED bar graph that shows red, orange and green lights as you approach the set check weighing limits
- Pre-set weighing limits with alarm and visual aid for more productivity
- Memory accumulation
- Large backlit LCD display with capacity tracker to show how much weighing capacity is remaining
- Bi-directional RS-232 interface
- Easy to use full numeric keypad with colour coded keys to quickly highlight important functions
- Rechargeable battery with up to 90 hours operation
- Auto power off to reduce power consumption
- Full range tare
- Internal resolution 1:600,000
- Large stainless steel pan
- OIML approved versions (CBK-M only)
- 5 weighing units
- Non-slip adjustable feet

Technical Specifications

Model	CBK 4	CBK 8H	CBK 8	CBK 16	CBK 32	CBK 48
Maximum capacity	4000g	8000g	8000g	16kg	32kg	48kg
Readability	0.1g	0.1g	0.2g	0.5g	1g	2g
Repeatability (S.D.)	0.1g	0.1g	0.2g	0.5g	1g	2g
Linearity (±)	0.2g	0.2g	0.4g	1g	2g	4g
Platform	225 x 275mm					

Applications

- Weighing
- Check weighing
- Percentage weighing
- Weight accumulation
- Parts counting

EC OIML Type Approved Models:

Model	CBK 3M	CBK 6M	CBK 15M	CBK 30M
Maximum capacity	3000g	6000g	15kg	30kg
Readability	1g	2g	5g	10g
Repeatability (S.D.)	1g	2g	5g	10g
Linearity (±)	2g	4g	10g	20g
Platform	225 x 275mm			



General Specifications

Units of measurement	Gram (g), Kilogram (kg), Pound (lb), Ounce (Oz), Pound-Ounce (lb-oz)
Typical stabilisation time	2 Sec
Interface	Bi-directional RS-232 interface (Not available on M version)
Calibration	Automatic external
Display	6 digit LCD display
Battery	Internal 6v 4Ah rechargeable battery up to 90 hours
Power supply	230VAC 50/60Hz 120VAC available
Operating temperature	-10°C to 40°C
Housing	ABS Plastic
Overall dimensions (wxdxh)	315 x 355 x 110mm
Net weight	4.1kg

Accessories

No. 8023 - Adam printer
 No. 3584 - Thermal paper roll for Adam printers
 No. 5006 - In-use cover
 No. 5006-5 - In-use cover pack of 5
 No. 5006-10 - In-use cover pack of 10

No. 6081 - Weigh below hanger (factory fitted)
 No. 9025 - Hard carry case with lock
 No. 9028 - RS-232 cable
 No. 9066 - RS-232 to USB interface cable
 No. 9061 - Adam DU - data collection software

GFK and GFK-H Floor Scales



Features

- Full tare range
- Accessible internal rechargeable battery
- Large backlit LCD display with capacity tracker
- Battery operation with auto-off to save battery life
- Parts counting with freely selectable sample sizes
- Check weighing LED lights to show acceptable limits
- Automatic accumulation
- Bi-directional RS-232 output for connection to computers and printers
- EC type approval (GFK-M only)

Applications

- Weighing
- Check weighing
- Percentage weighing
- Dynamic/Animal weighing
- Check weighing
- Check Counting



Technical Specifications

Model	GFK 75	GFK 150	GFK 300	GFK 600
Maximum capacity	75kg	150kg	300kg	600kg
Readability	5g	10g	20g	50g
Repeatability (S.D.)	5g	10g	20g	50g
Linearity (±)	10g	20g	40g	100g
Pan size	400mm x 500mm			600mm x 800mm

Model	GFK 75H	GFK 150H
Maximum capacity	75kg	150kg
Readability	1g	2g
Repeatability (S.D.)	2g	4g
Linearity (±)	4g	8g
Pan size	400mm x 500mm	

EC OIML Type Approved Models:

Model	GFK 60M	GFK 150M	GFK 300M
Maximum capacity	60kg	150kg	300kg
Readability	20g	50g	100g
Pan size	400mm x 500mm		

General Specifications

Units of measurement	Kilogram (kg) Grams (g)
Typical stabilisation time	2-3 Secs
Interface	Bi-directional RS-232 interface
Calibration	Automatic External
Display	Backlit display with 25mm high digits and capacity tracker
Power supply	Internal 220v transformer, 6v 4Ah rechargeable battery
Operating temperature	-10°C to 40°C
Housing	Indicator: ABS Plastic, Top Pan: Stainless steel, Base: Aluminum
Overall dimensions (wxdxh)	860mm x 400mm x 620mm (only GFK 75, 150, 300 and GFK-H & M models) GFK 600: 860mm x 600mm x 930mm
Net weight	15kg

Accessories

No. 8023 - Adam Printer

No. 3584 - Thermal paper roll for Adam printer

No. 9665 - In-use Cover

No. 9061 - AdamDU - data collection software

No. 9028 - RS-232 Cable

No. 9066 - RS-232 to USB interface cable

BFW Floor Weighing Scales



Features

- Single load cell construction
- Overload protection
- Adjustable levelling feet
- Mild steel construction
- Large stainless steel weighing pan
- Simple operation
- Zero Tracking
- Selectable automatic power off
- Selectable automatic backlit display
- Check-weighing with low and high limits
- Bi-directional RS-232 interface
- Internal rechargeable battery or mains power
- 4 weighing units (kg, gram, pound and ounce)

Applications

- Weighing
- Check weighing

Technical Specifications

Model	BFW 75	BFW 150	BFW 300
Maximum capacity	75kg	150kg	300kg
Readability	5g	10g	20g
Repeatability (S.D.)	5g	10g	20g
Linearity (\pm)	10g	20g	40g
Platform size	560 x 470mm		



General Specifications

Tare functions	Full
Units of measurement	Gram (g), Kilogram (kg)
Applications	Weighing, check weighing
Typical stabilisation time	2 - 3 Sec
Interface	Bi-directional RS-232 interface
Calibration	Automatic calibration
Display	Large LCD with backlight
Power supply	12VDC/500mA, Internal re-chargeable battery
Operating temperature	0°C to 40°C
Housing	Indicator: ABS Plastic, Platform: Mild Steel base with stainless steel pan
Overall dimensions (wxdxh)	470 x 685 x 950mm
Net weight	20kg

Accessories

- No. 8023 - Adam Printer
- No. 3584 - Thermal paper roll for Adam printers
- No. 9028 - RS-232 Cable
- No. 9066 - RS232 to USB Interface Cable
- No. 9061 - Adam DU - Data Collection Program

LBC Weighing Scale



Features

- Hold function
- Capacity tracker
- Tare function
- Large backlit display
- Adjustable feet
- Stainless steel top pan (Grade 304)

Applications

- Weighing
- Parts counting



Technical Specifications

Model	LBC 3	LBC 6	LBC 15	LBC 30
Maximum capacity	3kg	6kg	15kg	30kg
Readability	0.1g	0.2g	0.5g	1g
Repeatability (S.D.)	0.2g	0.4g	1g	2g
Linearity (\pm)	0.2g	0.4g	1g	2g
Pan size	250mm x 180mm			

General Specifications

Weighing Units	kg, g, lb
Stabilization Time	2 secs
Calibration	Automatic External
Display	3 x 6 digit LCD display clear light
Power Supply	12vDC 800mA adapter / Rechargeable 6v 4Ah battery
Operating Temperature	0°C to 40°C
Housing	ABS Plastic, Stainless steel top pan
Overall Dimensions	250mm x 307mm x 110mm
Net Weight	1.8kg

Accessories

No. 9664 - In-use cover

CBC Counting Scales



Features

- Bi-directional RS-232 interface, with multi-language text, for connection to printers and computers
- Data and time
- 3 Large backlit LCD displays showing weight, unit weight and count
- Easy-to-use colour coded keypad
- Re-chargeable battery with up to 90 hours of operation
- Memory accumulation to add all readings in a batch for a total weight and count
- Selectable auto power off to save battery life
- Generous stainless steel pan
- Non-slip adjustable feet
- Full range tare
- Internal resolution 1:600,000
- EC type approval (CBC-M only)

Applications

- Weighing
- Weight accumulation
- Parts counting
- Check counting
- Count accumulation

Technical Specifications

Model	CBC 4	CBC 8	CBC 16	CBC 32	CBC 48
Maximum capacity	4000g	8000g	16kg	32kg	48kg
Readability	0.1g	0.2g	0.5g	1g	2g
Repeatability (S.D.)	0.1g	0.2g	0.5g	1g	2g
Linearity (±)	0.2g	0.4g	1g	2g	4g
Pan size	225 x 275mm				

EC OIML Type Approved Models:

Model	CBC 3M	CBC 6M	CBC 15M	CBC 30M
Maximum capacity	3000g	6000g	15kg	30kg
Readability	1g	2g	5g	10g
Repeatability (S.D.)	1g	2g	5g	10g
Linearity (±)	2g	4g	10g	20g
Pan size	225 x 275mm			

General Specifications

Units of measurement	CBC 4, CBC 8: Gram (g) - All others: Kilogram (kg)
Typical stabilisation time	2 Sec
Interface	Bi-directional RS-232 port
Calibration	Automatic external
Display	3 backlit LCD displays to show weight, count and piece weight
Power supply	mains operated, internal rechargeable battery
Operating temperature	0°C to 40°C
Housing	ABS plastic, stainless steel platform
Overall dimensions (wxdxh)	315 x 355 x 110mm
Net weight	4.1kg

Accessories

No. 8023 - Adam printer
 No. 3584 - Thermal paper roll for Adam printers
 No. 5006 - In-use cover
 No. 5006-5 - In-use cover pack of 5
 No. 5006-10 - In-use cover pack of 10

No. 6081 - Weigh below hanger (factory fitted)
 No. 9025 - Hard carry case with lock
 No. 9028 - RS-232 cable
 No. 9066 - RS-232 to USB interface cable
 No. 9061 - Adam DU - data collection software



CBD Dual Counting Scales

Features

- Supports remote scale of up to 4 load-cells for enhanced weighing and counting
- 100 PLU's with description, unit weight and tare weight can be stored in the memory and recalled for quick counting
- Bi-directional RS-232 interface for connection to printers and computers
- Programmable for counting to a pre-set number of parts
- Memory accumulation of count and weight used in batching applications
- Preset tare can be entered using the full alpha numeric keypad
- Rechargeable battery with up to 90 hours operation and AC adapter
- Internal count resolution 1:600,000
- Stainless steel pan
- Non-slip adjustable feet



Technical Specifications

Model	CBD 3	CBD 6	CBD 15	CBD 30
Maximum capacity	3000g	6000g	15kg	30kg
Readability	0.1g	0.2g	0.5g	1g
Repeatability (S.D.)	0.1g	0.2g	0.5g	1g
Linearity (±)	0.2g	0.4g	1g	2g
Pan size	225 x 275mm			

Applications

- Weighing
- Weight accumulation
- Parts counting
- Check counting
- Count accumulation

General Specifications

Resolution	1:30,000
Internal counting resolution	1:600,000
Units of measurement	Kilogram (kg)
Typical stabilisation time	2 Sec
Interface	Bi-directional RS-232 interface, Second Scale Port
Calibration	Automatic External
Display	3 x 6 digit LCD displays
Power supply	9VDC, 800mA from external adapter Internal rechargeable battery (up to 90 hours of operation)
Operating temperature	0°C to 40°C
Other features	Accuracy enhancement for parts counting
Housing	ABS plastic, stainless steel platform
Overall dimensions (wxdxh)	315 x 355 x 110mm
Net weight	4.1kg

Accessories

- No. 8023 - Adam printer
- No. 3584 - Thermal paper roll for Adam printers
- No. 5006 - In-use cover
- No. 5006-5 - In-use cover pack of 5
- No. 5006-10 - In-use cover pack of 10
- No. 6081 - Weigh below hanger (factory fitted)

- No. 9025 - Hard carry case with lock
- No. 9028 - RS-232 cable
- No. 9066 - RS-232 to USB interface cable
- No. 9061 - Adam DU - data collection software
- Range of remote platforms (see platform scales)

GFC Floor Counting Scales



Features

- Freely Selectable sample size through keypad
- Bi-directional RS-232
- Backlit LCD display showing weight, average piece weight and number of pieces counted
- Rechargeable battery up to 70 hours of usage
- Date and time
- Selectable multi-language text for printing
- Preset counting to a value
- Entry for average piece weight of an item to be counted

Applications

- Weighing
- Parts counting
- Check counting

Technical Specifications

Model	GFC 75	GFC 150	GFC 300
Maximum capacity	75kg	150kg	300kg
Readability	5g	10g	20g
Repeatability (S.D.)	5g	10g	20g
Linearity (\pm)	10g	20g	40g
Pan size	400mm x 500mm		

General Specifications

Units of measurement	Kilograms (kg)
Typical stabilisation time	2-3 secs
Interface	Bi-directional RS-232 interface
Calibration	External
Display	Backlit LCD display
Power supply	Internal 220v transformer and rechargeable 6v 4Ah battery
Housing	Indicator: ABS plastic housing with stainless steel top pan Base: Mild steel
Overall dimensions (wxdxh)	860mm x 400mm x 620mm
Net weight	12.46kg



Accessories

No. 8023 - Adam printer

No. 3584 - Thermal paper roll for Adam printers

No. 9665 - In-use cover

AE 301 Indicators



Features

- Simple operation
- Zero tracking
- Selectable automatic backlit display
- Check-weighing with low and high limits
- Bi-directional RS-232 interface
- Selectable communication mode
- Overload protection (for MD series)
- Rechargeable battery or mains power
- 4 weighing units (kg, g, lb, oz)
- Weighing up 30,000 divisions
- Large easy to read LCD display

Applications

- Weighing
- Check-weighing

Technical Specifications

Model	AE 301 MD-100	AE 301 MD-50	AE 301
LoadCell	Mechanical to digital conversion kit that is supplied with a 100kg loadcell	Mechanical to digital conversion kit that is supplied with a 50kg loadcell	Selectable
Capacity	Selectable	Selectable	Selectable
Repeatability (S.D.)	2d	2d	2d

General Specifications

Units of measurement	Kilogram (kg), Gram (g), Pound (lb), Ounce (oz)
Excitation	5vdc
Sensitivity	0.15uv/d
Linearity	0.01% FS
Zero Range	0-10mV
Signal Range	0.40mV
Number of Loadcell	Upto 4 x 350ohm loadcells
Typical stabilisation time	3-5 sec
Interface	Bi-directional RS-232 interface
Calibration	Automatic
Display	Large LCD with backlight
Power supply	Rechargeable battery / 12v 500mA adaptor
Connection	4 pin sub-miniature connector
Housing	ABS plastic
Overall dimension (wxdxh)	260mm x 155mm x 105mm
Net Weight	1.35kg



Accessories

No. 8023 - Adam printer

No. 3584 - Thermal paper roll for Adam printers

GK and GK-M Indicators



Features

- Full tare range
- Accessible internal rechargeable battery
- Large backlit LCD display with capacity tracker
- Battery operation with auto-off to save battery life
- Parts counting with freely selectable sample sizes
- Check weighing LED lights to show acceptable limits
- Automatic accumulation
- Bi-directional RS-232 output for connection to computers and printers
- EC type approved version (GK-M only)

Applications

- Weighing
- Parts counting
- Percentage weighing
- Animal/dynamic weighing
- Check weighing
- Check counting

Technical Specifications

Model	GK Non-approved
Capacity	Selectable
Readability	Selectable
Resolution	Up to 1:30,000
Number for Loadcells	Up to 4 x 350ohm loadcells

EC OIML Type Approved Models:

Model	GK-M Approved - EC OIML approved
Capacity	Selectable
Readability	Selectable
Resolution	1:3,000
Number of Loadcells	Up to 4 x 350ohm loadcells
OIML Class	Class III

General Specifications

Units of measurement	Kilogram (kg), Grams (g)
Excitation	5Vdc
Sensitivity	0.15uv/d (GFK-M, 1.5uv/e)
Linearity	0.01% FS
Zero Range	0- 10mv
Signal Range	0-40mv
Typical stabilisation time	2-3 Secs
Interface	Bi-directional RS-232 interface
Calibration	Automatic External
Display	6 digits LCD display with capacity tracker and symbols for units
Power supply	230VAC 50/60Hz
Connection	Loadcell (6 wires) RS232
Housing	ABS Plastic
Overall dimension (wxdxh)	260mm x 170mm x 115mm
Net Weight	2kg



GC Counting Indicator



Features

- Weighing
- Counting
- Preset counting to a value
- Bi-directional RS-232 to print out weight, average piece weight and number of pieces counted
- Freely selectable sample size through keypad entry
- Entry for average piece weight of an item to be counted
- Can be linked with 1-4 loadcells

Applications

- Weighing
- Parts counting
- Check counting

Technical Specifications

Model	GC Indicator
Capacity	Free entry up to 30,000 divisions
Readability	As required for 30,000d or less
Resolution	Up to 30,000d
Repeatability (+/-)	1d
Linearity (+/-)	2d

General Specifications

Units of measurement	Kilograms (kg), Gram (g)
Excitation	5Vdc
Sensitivity	0.15uv/d (GFK-M, 1.5uv/e)
Linearity	2d
Zero Range	0- 10mv
Signal Range	0-40mv
Number of Loadcell	4 Loadcells
Typical stabilisation time	2 secs
Interface	Bi-directional RS-232 interface
Calibration	Automatic External
Display	3 x 6 digit LCD digital display
Power supply	Internal rechargeable battery / 230VAc 50/60Hz adapter
Connection	Loadcell (6 wires) RS232
Housing	ABS plastic
Overall dimension (wxdxh)	260mm x 170mm x 115mm
Net Weight	2kg



PB Platform Bases

Features

- Adjustable levelling feet
- Approximately 3 metres long shielded cable
- Available in a range of capacities and platform sizes
- Can be supplied complete with indicator
- Overload stops protect the loadcell
- Precision load cells for accurate weighing results every time
- Meets OIML Class III specifications
- Mild Steel construction



Technical Specifications

Model	PB 604	PB 1504	PB 606	PB 1506	PB 3006
Maximum capacity	60kg	150kg	60kg	150kg	300kg
Platform size	400mm x 400mm		600 x 600mm		
Net weight	25kg		25kg		

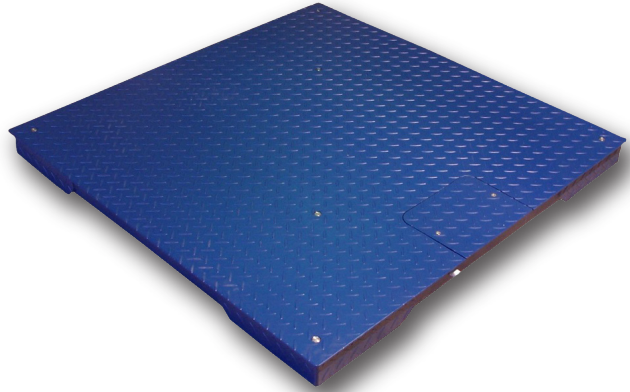
General Specifications

OIML Class	Class III
Loadcell	Single point
Excitation voltage	5 to 10VAC or DC
Cable Length	3 metres shielded loadcell cable
Housing	Mild Steel with stainless steel pan

PT Platform Bases

Features

- Checker tread plate (Mild steel versions only)
- Class III OIML approved loadcell installed
- 4 loadcell construction
- 3 meters of base to indicator cable
- Adjustable heavy duty rubber feet
- Optional ramps
- Available with GK Indicator
- Metal cable conduit used for full protection of leads



Technical Specifications

Model	PT 112	PT 212	PT 312
Maximum capacity	1000kg	2000kg	3000kg
Readability	0.5kg	0.5kg	1kg
Platform size	1200 x 1200mm		
Net weight	95kg		

General Specifications

Loadcell	4 loadcells
Excitation voltage	5 to 10VAC or DC
Cable length	3 meters shielded loadcell cable
Housing	Mild Steel
Height from ground	100mm

AELP Pallet Beams



Features

- Lightweight with handles for portability
- Precision load cells for accurate weighing results every time
- Low profile beams to allow easy weighing of pallets using pallet trucks
- 2 beams per set
- Supplied with the AE 301 or GK indicator as required
- Large clear LCD display, highly visible in all work areas
- Simple user-friendly operation
- Bi-directional RS-232 interface for connection to printers and computers
- Rechargeable battery
- Mains adaptor supplied as standard
- Selectable digital filtering
- Hold function
- Metal cable conduit used for full protection of leads

Applications

- Weighing
- Weight accumulation
- Parts counting



Technical Specifications

Model	AELP 1000	AELP 2000
Maximum capacity	1000kg	2000kg
Readability	0.5kg	0.5kg
Repeatability (S.D.)	0.5kg	0.5kg
Linearity (±)	0.5kg	1kg
Net weight	28.3kg	

General Specifications

Units of measurement	Kilogram (kg), Pounds (lb) when enabled
Typical stabilisation time	3 Sec
Interface	Bi-directional RS-232 interface
Calibration	Lockable keyboard calibration
Display	LCD
Power supply	12VDC 500ma from external adaptor or internal rechargeable 6V lead acid battery
Loadcell input connector	4 Pin Connector
Housing	Indicator: plastic casing - Base: mild Steel
Overall dimension (wxdxh)	Indicator: 220 x 160 x 105mm Beams: 1250 x 80 x 60mm

Accessories

- No. 8023 - Adam printer
- No. 3584 - Thermal paper roll for Adam printers
- No. 9028 - RS-232 cable
- No. 9066 - RS-232 to USB interface cable
- No. 9061 - Adam DU - data collection software

IHS Crane Scale



Features

- Selectable readability for different environments
- 360° rotational hook
- Large bright red LED display
- Remote control for easy operation
- Rechargeable battery for up to 150 hours usage
- Robust die cast housing

Applications

- Weighing



Technical Specifications

Model	IHS 1	IHS 3	IHS 5	IHS 10
Maximum capacity	1000kg	3000kg	5000kg	10000kg
Readability	0.2 / 0.5kg	0.5 / 1kg	1 / 2kg	2 / 5kg
Repeatability (S.D.)	0.2 / 0.5kg	0.5 / 1kg	1 / 2kg	2 / 5kg
Linearity (±)	0.2 / 0.5kg	0.5 / 1kg	1 / 2kg	2 / 5kg

General Specifications

Units of measurement	Kilograms (kg)
Typical stabilisation time	3 secs
Display	22mm LED
Power supply	9VDC 800mA adapter and internal rechargeable battery
Housing	Aluminum housing with plated steel hooks and ring support

The limits stated are the ultimate overload limits of the scales. Adam Equipment Co Ltd, its directors, owners and affiliated companies and organisations cannot be held liable for any resulting damage or injury sustained as a result of the machines being used in excess of their stated capacities and ultimate overload limits.

AZextra Retail Scales - Price computing



Features

- Low profile design and robust construction
- Non-slip adjustable feet
- Front and rear backlit displays for operator and customer to see the total cost, unit price and weight
- Colour coded keys to quickly identify the most frequently used keys
- Bi-directional RS-232 interface for communication to printers and computers as well as integration into other systems
- Real time clock with date and time
- 103 product look up (PLU) memories to store a full range of products
- Auto clear function can be set to automatically clear the last unit price entry to help reduce miscalculation
- Rechargeable battery with up to 90 hours of operation lets you take the AZextra anywhere
- Auto power off to save battery life
- Stainless steel weighing pan
- Full tare range
- Australian OIML and EC type approved

Technical Specifications: EC OIML type approved models

Model	AZextra 3	AZextra 6	AZextra 15	AZextra 30
Maximum capacity	3000g	6000g	15kg	30kg
Readability	1g	2g	5g	10g
Pan size	225 x 275mm			

Pillar Versions:

Model	AZextra 3P	AZextra 6P	AZextra 15P	AZextra 30P
Maximum capacity	3000g	6000g	15kg	30kg
Readability	1g	2g	5g	10g
Pan size	225 x 275mm			

General Specifications

Units of measurement	Gram (g), Kilogram (kg)
Typical stabilisation time	2 Sec
Display	3 x 6 digit backlit LCD displays for weight, unit price and price to pay
Power supply	Internal 6v 4Ah rechargeable battery with up to 90 hours, mains power supply
Operating temperature	-10°C to +40°C
Housing	ABS plastic with stainless steel platform
Overall dimensions (wxdxh)	AZextra: 315 x 355 x 110mm AZextra-P: 315 x 355 x 535mm
Net weight	AZextra: 4.3kg AZextra-P: 4.7kg

Accessories

No. 8023 - Adam printer
 No. 3584 - Thermal paper roll for Adam printers
 No. 5006 - In-use cover
 No. 5006-5 - In-use cover pack of 5
 No. 5006-10 - In-use cover pack of 10
 No. 9025 - Hard carry case with lock (AZextra model only)

No. 9028 - RS-232 cable
 No. 9066 - RS-232 to USB cable
 No. 9061 - AdamDU - data collection software

WBZ Retail Wash Down Scale



Features

- EC type approval
- Full tare range
- Stainless steel weighing pan
- Front and rear backlit displays for operator and customer to see the total cost, unit price and weight
- Sealed wash down rated to IP65 for wet environments

Applications

- Weighing
- Wash down / Wet environment
- Price computing



Technical Specifications: EC OIML type approved models

Model	WBZ 3	WBZ 6	WBZ 15
Maximum capacity	3kg	6kg	15kg
Readability	1g	2g	5g
Repeatability (S.D.)	1g	2g	5g
Linearity (±)	2g	4g	10g
Pan Size	210mm x 173mm		

General Specifications

Units of measurement	Kilogram (kg)
Typical stabilisation time	2 Secs
Display	6 digits backlit LCD digital display
Power supply	12VDC 800mA AC adapter, internal rechargeable 6v 4Ah battery (both included)
Operating temperature	-10° to 40°C
Housing	IP65 sealed ABS plastic housing with stainless steel pan
Overall Dimensions (wxhxd)	231mm x 265mm x 153mm
Net weight	3.3kg

MXB Baby Scale



Features

- Simple Two button operation
- Solid one piece construction is lightweight and easy to clean
- 3 weighing units
- Large LCD display
- Mains and battery operated with low battery warning and auto-off to save battery life
- Hold function to keep weight showing on display
- Supplied with mains adapter and tape measure
- Splash proof to protect from accidental spills

Applications

- Weighing
- Animal/ dynamic weighing

Technical Specifications

Model	MXB 20
Capacity	20kg
Readability	10g
Repeatability (S.D)	10g
Linearity (+/-)	20g
Pan Size	535mm x 280mm



General Specifications

Units of measurement	Kilogram (kg), Pounds (lb), Pound-Ounce (lb-oz)
Typical stabilisation time	2-3 Secs
Calibration	Automatic External
Display	LCD
Power supply	6VAC adapter or 4 x AA batteries
Housing	ABS Plastic
Overall dimension (wxdxh)	600mm x 340mm x 90mm
Net Weight	2kgs

MDW 160M Medical Scales



Features

- Robust metal housing
- Height rod as standard (measures up to 210cm)
- Anti-slip platform
- Adjustable zero point
- Wheels allow easy movement
- Weighing in kg and lb

Applications

- Weighing
- Measuring Height

Technical Specifications

Model	MDW 160M
Maximum capacity	160kg
Readability	100g
Repeatability (S.D.)	200g
Linearity (\pm)	200g
Pan size	375mm x 275mm

General Specifications

Units of measurement	Kilogram (kg), Pound (lb)
Housing	Metal
Overall dimensions (wxdxh)	530mm x 275mm x 1485mm
Net weight	15kg

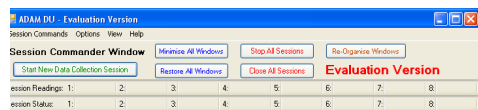
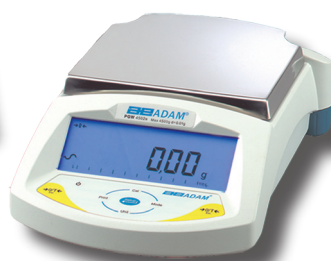
Anti-Vibration Table & AdamDU Data Collection Software

Features

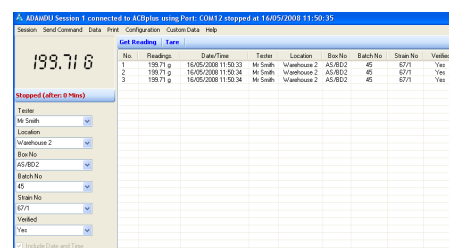
- Scratch resistant marble slab
- Two table construction keeps the marble block in the middle and reduces interference
- Large working surface of 400 x 450mm
- Room around the vibration slab for resting samples
- Easy set up light weight mild steel tubular frame
- Adjustable levelling feet for uneven surfaces
- Polished finish

General Specifications

Overall dimensions (wxdxh)	800 x 600 x 782mm
Work surface dimensions	400 x 450mm
Weight of work surface	48kg
Total Weight	82kg



The Commander window lets you view data for up to 8 balances or scales on one screen for an overview of the active data sessions.



Six user-defined fields are available for custom data entry with each reading. Custom data can be exported with the weighing data.



Var (n-1):	67431.122764	Var:	65825.619841	St. Dev (n-1):	259.67503301	St. Dev:	256.56504011
Min:	199.25	Max:	935.23	Mean:	584.05809655	Median:	664.04498293

Real time graphing and statistics are easily viewable in the data grid. Balance control buttons let you request data or tare the balance right from the software.

Practical Functionality – Smart Features

- Monitor and collect data readings for up to 8 balances or scales simultaneously.
- Record custom data or notations along with readings using up to 6 user-defined fields.
- Log calibration reports to file for maintaining complete calibration records.
- Collect date and time with readings.
- Collect balance serial number with readings for unique identification. (Feature may not be available with all balances and scales).
- Configure AdamDU to remember individual session settings and file names.

Statistics and Graphing

- View statistics including Min, Max, Median, Mean, Variance, and Standard Deviation.
- Graph readings in real time. Print results and graphs from within the AdamDU application.
- Quickly search for a specific reading, min, or max readings

Easy Data Management

- Dynamically export readings in several file formats (text, CSV, HTML, XML) for importing to other systems or applications.
- Export captured readings automatically to Microsoft® Excel¹ or Microsoft® Word¹ for further analysis or reporting.
- Export captured readings to Windows® Clipboard for quick pasting in Windows® applications.

¹You need a licensed copy of Microsoft® Word and Microsoft® Excel to use this facility

Microsoft Word, Microsoft Excell, Microsoft and Windows is a registered trademark of Microsoft Corporation in the United States and other countries.



Adam Equipment (Shanghai) Co. Ltd.

Hengfeng RD. 218, Xiandai Jiaotong
Building Room 609
Shanghai, P.R. China

Tel: +86 (21) 5180 1901 - Fax: +86 (21) 5180 1907
Email: sales@adamequipment.com.cn

Adam Equipment (S.E. ASIA) PTY Ltd.

2/71 Tacoma Circuit, Canning Vale 6155
Perth
Western Australia

Tel: +61 (0) 8 6461 6236 - Fax: +61 (0) 8 9456 4462
Email: sales@adamequipment.com.au

www.adamequipment.com