



Beijing Star Instrument Technology Co., Ltd.



### TX-110/120 SERIES BALANCE PRINTER

- Support almost all brand balances / scales
- Compliance with GLP/FDA/GMP certification
- Built-in clock, rights management
- Support other laboratory instruments

### TX-180 SERIES BALANCE PRINTER

- Audit trail, data storage, authority management
- " Minimum weigh" management
- Custom report style, variable input
- Rich weighing applications: statistics, formulation, etc



**FDA/GMP Certification**  
**Production Quality Management**

## Profile

Beijing Star Instrument Technology Co., Ltd. is a company that has obtained high-tech certification from China. It was established in 2008 and has the right to import and export commodities, providing printing solutions for balance/weighing instruments and other equipments.

We have obtained a number of patents, software copyrights and appearance patents. The main products have obtained EU CE certification issued by TUV and are in compliance with the RoHS environmental protection regulations. The product sales area covers Southeast Asia, the Americas, Africa, the European Union and other parts of the world.

We cooperate with well-known companies in the industry to design and produce high-quality printers for them.

Since the beginning of our establishment, we have begun to focus on printing solutions for balances/scales. We have designed several special printers for GMP/FDA certification and production management in the pharmaceutical and chemical industries. Our printers are compatible with almost all balances/scales, and are widely used in laboratories and production processes in the pharmaceutical and chemical industries to help customers improve their production quality management level and efficiency.

### Notices:

- The trademarks mentioned in this brochure are all owned by the holder of the trademark.
- For product specifications, please refer to the specification or contact our sales representative.
- Our printer products may not support very few types of instruments.
- This brochure is only published in China.

## TX-180 SERIES BALANCE PRINTER

### ·High-value

Beautiful, powerful and high reliability.

### ·Fully compatible

RJ45/RS232/USB interface for connection to virtually all balances/scales and other laboratory instruments.

### ·Complete Keypad

Convenient and fast Input, support barcode scanner.

### ·Large display

Information is readily available and supports multiple languages.





### ·Audit trail

Record experiment results, user login, operation behavior/events, meet strict quality management requirements.

### ·Dot matrix / thermal selectable.



## Specifications

|                         |  |  |  |  |
|-------------------------|--|--|--|--|
| <b>Model</b>            | <b>TX-180</b>  | <b>TX-181</b>  | <b>TX-182</b>  | <b>TX-183</b>  |
| Printing Method         | Impact dot matrix  | Impact dot matrix  | Impact dot matrix  | Thermal  |
| Paper                   | Normal   | Normal   | Normal   | Thermal paper<br>Label paper   |
| Display                 | 128 × 64   | 256 × 64   | 256 × 64   | 256 × 64   |
| Build-in clock          | ●  | ●  | ●  | ●  |
| Digital/Character Key   |  | ●  | ●  | ●  |
| Name, Lot No., ID...    | ●  | ●  | ●  | ●  |
| Barcode printing        |  |  |  | ●  |
| Barcode scanner support |  | ●  | ●  | ●  |
| Data export             |  |  | ●  | ●  |
| GLP compatible          | ●  | ●  | ●  | ●  |
| Tare/G/N mode           | ●  | ●  | ●  | ●  |
| Statistical             | ●  | ●  | ●  | ●  |
| Formulation             |  | ●  | ●  | ●  |
| Curve printing          |  | ●  | ●  | ●  |
| “Minimum weight”        |  | ●  | ●  |  |
| Authority management    | 2 level  | 2 level  | 3 level  | 2 level  |
| Audit trail             |  |  | ●  |  |

# FDA/GMP Certification Production Quality Management

## TX-100/110/120 SERIES BALANCE PRINTER

Support Various Types of Scales/Balances



**TX - 100**  
(Basic Edition)



**TX-110/TX-120**  
(Standard/Professional Edition)

The TX-100/110/120 series balance printer, which has a streamlined appearance and an outstanding cost-effective, completely meets the quality requirements of the chemical and pharmaceutical industry and GLP, GMP standard certification. From the most basic printing needs, to the wealth of applications, the TX-100/110/120 series balance printer provides users with a flexible choice.

### Features:

- Support List: SHIMADZU, SARTORIUS, METTLER, AND, ADAM, OHAUS, SHINKO...ect.
- High-speed dot printing, printed pages are suitable for long-term preservation, ISO/GLP-compliant Data Printout.
- 128x64 OLED display.
- Built in real-time clock.
- Support weighing, statistical, sum, mean and formulation function.
- Editable title and tail.
- Sample name and batch number can be inputted and printed.
- Data export: all data from balance can be exported to U-Disk in excel or txt file.
- Periodic printing.
- Barcode Scanner Support.

## Printing Examples

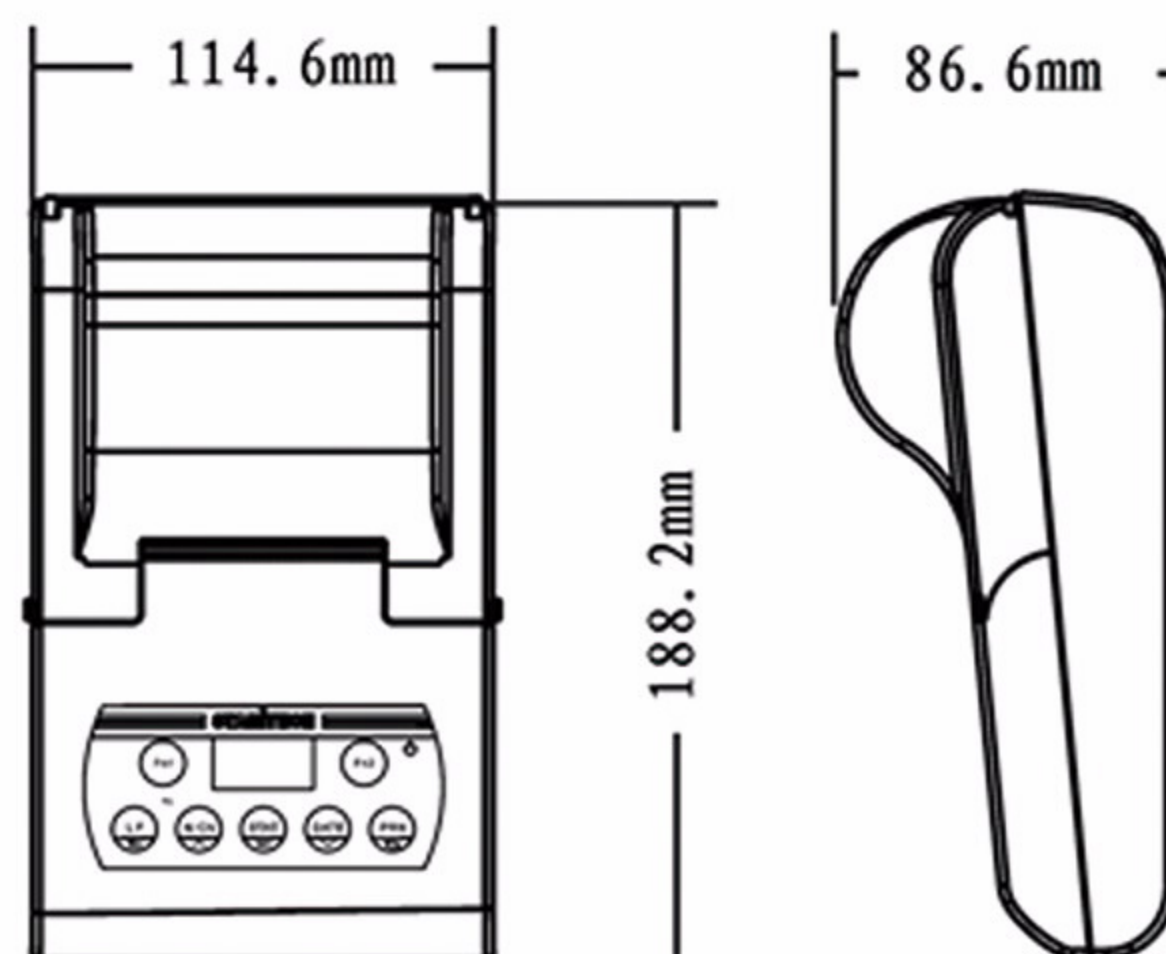
|  |   |   |   |
|--|---|---|---|
| <pre> ----- AND Model:          HR120 S/N:           D23452456 ID:            1234 Date:          2014-03-28 Start Time:    17:30:22 Sample No.     00000000543  001 17:30:22  10.003 mg 002 17:30:25  10.004 mg 003 17:30:26  10.005 mg  ----- End Time:      17:30:28  Signature: ----- </pre> | <pre> ----- Shimadzu Corporation Model:         AUW120D S/N:          D684297070 ID:           61100 Date:         2013-10-01 Time:         16:37:09 Sample No.    00000000247  ----- Tare:         10.001 mg Gross:        10.002 mg Net:          0.001 mg  ----- End Time:     16:37:10  Signature: ----- </pre> | <pre> -----&lt;STAT&gt;----- No.001        10.006 mg No.002        10.007 mg No.003        10.008 mg -----&lt;RESULT&gt;----- N=             3 T=            30.021 mg MAX=          10.008 mg MIN=          10.006 mg RNG=           0.002 mg MEAN=         10.0070 mg SD=           0.001000 mg CV=           0.009993005 % ----- End Time:     16:40:46  Signature: ----- </pre> | <pre> -----&lt;STAT&gt;----- No.001        10.006 mg No.002        10.007 mg No.003        10.008 mg -----&lt;RESULT&gt;----- N=             3 T=            30.021 mg MAX=          10.008 mg MIN=          10.006 mg RNG=           0.002 mg MEAN=         10.0070 mg SD=           0.001000 mg CV=           0.009993005 % ----- End Time:     16:40:46  Signature: ----- </pre> |
|--|---|---|---|

| Features                     | TX-100 | TX-110 | TX-120 |
|------------------------------|--------|--------|--------|
| 128x64 OLED                  |        | ●      | ●      |
| Date & time (built-in clock) | ●      | ●      | ●      |
| Direct mode                  | ●      | ●      | ●      |
| Weighing mode                | ●      | ●      | ●      |
| Statistical mode             |        | ●      | ●      |
| Sum mode                     |        | ●      | ●      |
| Mean mode                    |        | ●      | ●      |
| Formulation mode             |        | ●      | ●      |
| Sample name & ID input       |        | ●      | ●      |
| Authority management         |        | ●      | ●      |
| Periodic printing            |        | ●      | ●      |
| Data export(use U-Disk)      |        |        | ●      |
| Data curve print             |        |        | ●      |
| Optional external keypad     |        |        | ●      |
| Barcode scanner support      |        |        | ●      |

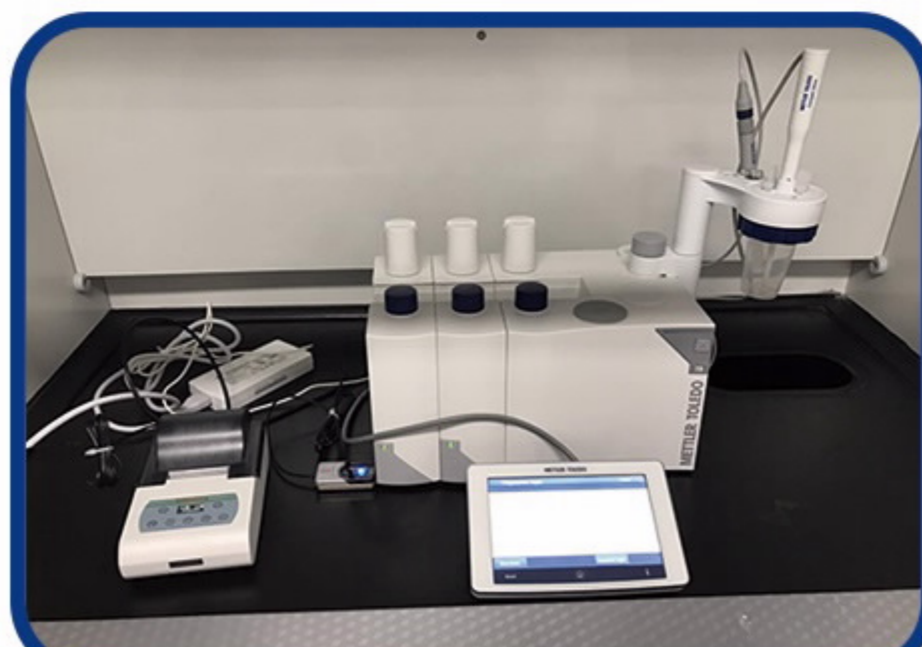
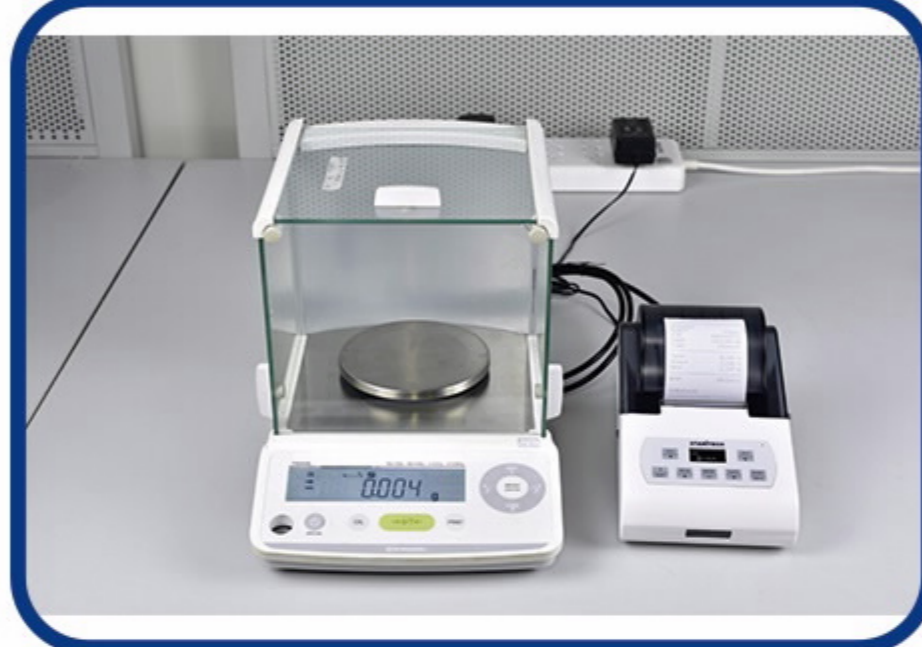
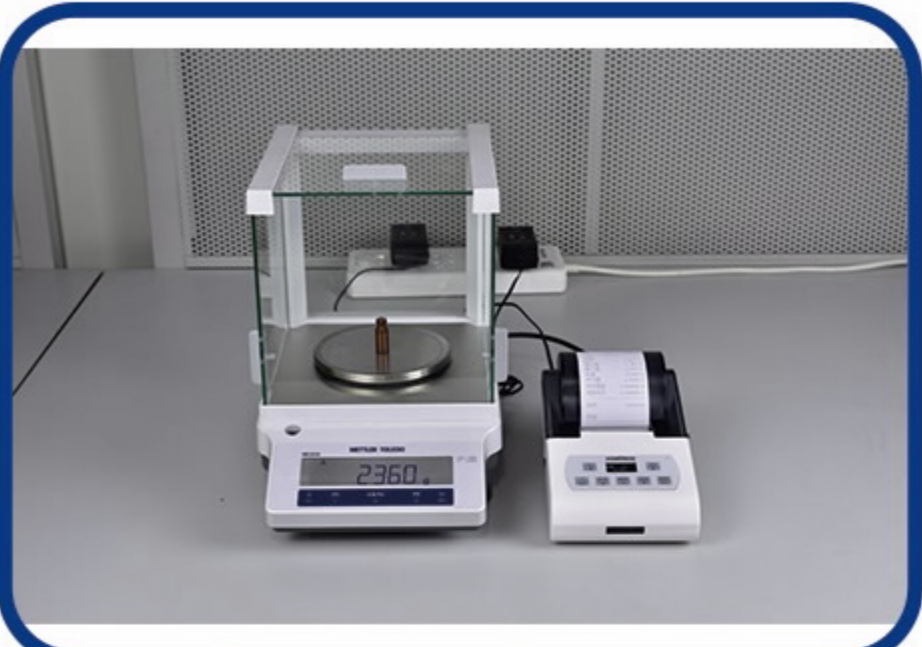
## Specifications

Printing method: Impact dot  
 Inking: Ink ribbon (EPSON ERC-22 or ERC-09)  
 Printing format: 24 digits / line (5 × 7 dot matrix)  
 Character size: 1.7mm (W) × 2.6mm (H) ASCII  
 Paper: Regular paper 57.5mm width, 50mm in diameter  
 Printer mechanism durability: 1.5 million lines  
 Operation temperature range: 0-50°C  
 Input voltage: DC 12V (1.5A)  
 Interface: RS-232C  
 Gross weight (with packaging): 1500g approx.

### Physical dimensions:



Example Photos





Web: [www.bjtxky.com](http://www.bjtxky.com)

[www.star-itech.com](http://www.star-itech.com)

Sale: [ida@star-itech.com](mailto:ida@star-itech.com)

(TEL) +86 010-82358011

Technical: [support@star-itech.com](mailto:support@star-itech.com)

2019-Oct-13